

4-15-2013

# Medial prefrontal cortex lesions impair decision-making on a rodent gambling task: Reversal by D1 receptor antagonist administration

Tracie A. Paine  
*Oberlin College*, [tracie.paine@oberlin.edu](mailto:tracie.paine@oberlin.edu)

Samuel K. Asinof  
*Oberlin College*

Geoffrey W. Diehl  
*Oberlin College*

Anna Frackman  
*Oberlin College*

Joseph Leffler  
*Oberlin College*

Follow this and additional works at: [https://digitalcommons.oberlin.edu/faculty\\_schol](https://digitalcommons.oberlin.edu/faculty_schol)

 Part of the [Neuroscience and Neurobiology Commons](#)

---

## Repository Citation

Paine, Tracie A., S.K. Asinof, G.W. Diehl, A. Frackman, and J. Leffler. 2013. "Medial prefrontal cortex lesions impair decision-making on a rodent gambling task: Reversal by D1 receptor antagonist administration." *Behavioural Brain Research* 243: 247-254.

This Article is brought to you for free and open access by Digital Commons at Oberlin. It has been accepted for inclusion in Faculty & Staff Scholarship by an authorized administrator of Digital Commons at Oberlin. For more information, please contact [megan.mitchell@oberlin.edu](mailto:megan.mitchell@oberlin.edu).

1  
2  
3  
4 **Medial prefrontal cortex lesions impair decision-making on a rodent gambling**  
5 **task: reversal by D1 receptor antagonist administration**  
6  
7  
8

9  
10 Tracie A. Paine, Samuel K. Asinof\*, Geoffery W. Diehl\*, Anna Frackman\*, Joseph  
11 Leffler\*  
12

13  
14  
15 Department of Neuroscience, Oberlin College, Oberlin OH 44074  
16

17 \*indicates authors contributed equally to the work  
18  
19  
20  
21  
22  
23  
24  
25

26 **Text:**

27 Words in Abstract: 205

28 Words in Introduction: 540

29 Words in Materials and Methods: 1325

30 Words in Discussion: 1680

31 Figures: 4  
32  
33  
34

35 **Corresponding Author:**

36 Tracie A. Paine

37 119 Woodland Street

38 Oberlin, OH 44074

39 Phone: 440 775 8366

40 Fax: 440 775 5397

41 Email: [tpaine@oberlin.edu](mailto:tpaine@oberlin.edu)  
42  
43  
44  
45  
46  
47  
48  
49  
50  
51  
52  
53  
54  
55  
56  
57  
58  
59  
60  
61  
62  
63  
64  
65

1  
2  
3  
4 **Abstract**  
5

6 Decision-making is a complex cognitive process that is impaired in a number of  
7 psychiatric disorders. In the laboratory, decision-making is frequently assessed using  
8 “gambling” tasks that are designed to simulate real-life decisions in terms of uncertainty,  
9 reward and punishment. Here, we investigate whether lesions of the medial prefrontal  
10 cortex (PFC) cause impairments in decision-making using a rodent gambling task (rGT).  
11 In this task, rats have to decide between 1 of 4 possible options: 2 options are  
12 considered “advantageous” and lead to greater net rewards (food pellets) than the other  
13 2 “disadvantageous” options. Once rats attained stable levels of performance on the  
14 rGT they underwent sham or excitotoxic lesions and were allowed to recover for 1 week.  
15 Following recovery, rats were retrained for 5 days and then the effects of a dopamine  
16 D1-like receptor antagonist (SCH23390) or a D2-like receptor antagonist (haloperidol)  
17 on performance were assessed. Lesioned rats exhibited impaired decision-making:  
18 they made fewer advantageous choices and chose the most optimal choice less  
19 frequently than did sham-operated rats. Administration of SCH23390 (0.03 mg/kg), but  
20 not haloperidol (0.015-0.03 mg/kg) attenuated the lesion-induced decision-making  
21 deficit. These results indicate that the medial PFC is important for decision-making and  
22 that excessive signaling at D1 receptors may contribute to decision-making  
23 impairments.  
24  
25  
26  
27  
28  
29  
30  
31  
32  
33  
34  
35  
36  
37  
38  
39  
40  
41

42 **Keywords:** rodent gambling task, medial prefrontal cortex, dopamine, lesion,  
43 SCH23390, haloperidol  
44  
45  
46  
47  
48  
49  
50  
51  
52  
53  
54  
55  
56  
57  
58  
59  
60  
61  
62  
63  
64  
65

1  
2  
3  
4  
5  
6  
7  
8  
9  
10  
11  
12  
13  
14  
15  
16  
17  
18  
19  
20  
21  
22  
23  
24  
25  
26  
27  
28  
29  
30  
31  
32  
33  
34  
35  
36  
37  
38  
39  
40  
41  
42  
43  
44  
45  
46  
47  
48  
49  
50  
51  
52  
53  
54  
55  
56  
57  
58  
59  
60  
61  
62  
63  
64  
65

## Highlights

1. Lesions of the medial prefrontal cortex impaired stable decision-making
2. The D1 receptor antagonist SCH23390 reversed the lesion-induced decision-making deficit.
3. The D2-like receptor antagonist haloperidol did not affect decision-making.

1  
2  
3  
4 **1.0 Introduction**  
5

6 Decision-making is a complex cognitive process that involves assessing the risk,  
7 reward, and costs associated with different alternatives and then selecting that which  
8 will likely lead to the maximal benefit for the individual [1]. Decision-making deficits are  
9 commonly observed in a number of psychiatric conditions including attention-deficit  
10 hyperactivity disorder (ADHD; [2]), substance abuse [3], Parkinson’s Disease [4,5,6],  
11 problem gambling [7,8] and schizophrenia [9, 10, 11,12]. These decision-making  
12 deficits can have devastating consequences and may contribute to the poor outcomes  
13 for afflicted individuals. Understanding the neural basis of optimal decision-making may  
14 allow us to develop strategies to treat decision-making impairments.  
15  
16  
17  
18  
19  
20  
21  
22  
23

24 In the laboratory, decision-making is frequently tested using “gambling” tasks that are  
25 designed to simulate real-life decisions in terms of uncertainty, reward and punishment  
26 [1]. The Iowa Gambling Task (IGT; [13]), a task commonly used to assess decision-  
27 making in the laboratory, requires human subjects to choose between 4 different decks  
28 of cards. Unbeknownst to the subject, two of the decks of cards are associated with  
29 large financial gains, and unpredictable even larger losses such that continued choice of  
30 these decks leads to a net financial loss. The other two decks are associated with small  
31 financial gains, and unpredictable smaller losses such that continued choice of these  
32 decks leads to a net financial gain. Healthy control subjects develop a preference for  
33 the advantageous small win/small loss decks, while individuals with ventromedial PFC  
34 [13] or dorsolateral PFC [14] lesions fail to develop these preferences; instead they  
35 prefer the disadvantageous large reward/large loss decks.  
36  
37  
38  
39  
40  
41  
42  
43  
44  
45  
46  
47

48 Recently, rodent “gambling” tasks have been developed that share many of the features  
49 of the human gambling tasks including uncertainty, reward and punishment [15, 16].  
50 The rodent gambling task (rGT) developed by Winstanley and colleagues [15,17] is  
51 notably similar to the IGT— there are 4 response options each of which is associated  
52 with a different reward/punishment contingency. Two of the response options are  
53 associated with small rewards (food pellets) and small, infrequent punishments  
54 (omission of reward and delay until the next trial). The other two options are associated  
55  
56  
57  
58  
59  
60  
61  
62  
63  
64  
65

1  
2  
3  
4 with large rewards and large, frequent punishments. These response contingencies  
5 result in two options being relatively more “advantageous” than the other two  
6 “disadvantageous” options. Similar to healthy humans subjects, control rats develop a  
7 preference for the advantageous small reward/small punishment options over the  
8 disadvantageous large reward/large punishment options [15].  
9

10  
11  
12  
13  
14  
15 Using the rGT developed by Winstanley and colleagues [15, 17], we aimed to determine  
16 whether lesions of the medial PFC negatively affected stable choice behavior. It has  
17 previously been observed that medial PFC and orbitofrontal cortex (OFC) lesions impair  
18 the development of an advantageous decision-making strategy in rats [17,18]. Once a  
19 stable strategy had been established however, OFC lesions did not affect choice  
20 behavior [17]. Given the role of the medial PFC in human decision-making [14] and  
21 because a number of psychiatric conditions display pathology in this brain area (e.g., [2-  
22 12] we aimed to determine whether medial PFC lesions would cause a change in rats’  
23 decision-making. Because “risk” based decision-making is modulated by dopamine [1,  
24 15, 19] and because medial PFC lesions can cause changes in striatal dopamine  
25 transmission [20, 21, 22], we also investigated whether D1-like or D2-like receptor  
26 antagonist administration affected choice behavior in rats with sham or medial PFC  
27 lesions.  
28  
29  
30  
31  
32  
33  
34  
35  
36  
37  
38  
39  
40

## 41 **2.0 Materials and Methods**

### 42 **2.1 Rats**

43  
44 Twenty-seven male Sprague-Dawley rats born at Oberlin College were used. Rats  
45 were maintained on a 14-h/10-h light-dark cycle (lights on at 0700h) and were group  
46 housed until post-natal day (PND) 55; during this time they had unlimited access to food  
47 (Purina Rat Chow) and water. On PND 55 rats were pair housed until the time of  
48 surgery at which time they were housed singly. Upon pair housing and throughout the  
49 experiment rats were food restricted to ~85% of their free feeding weight; rats were fed  
50 after daily training sessions. Experiments were conducted in accordance with the Guide  
51 for the Care and Use of Laboratory Animals [23] and Oberlin College policies.  
52  
53  
54  
55  
56  
57  
58  
59  
60  
61  
62  
63  
64  
65

## 2.2 Drugs

Ibotenic acid and haloperidol were purchased from Sigma-Aldrich (St. Louis, MO). Ibotenic acid was dissolved in physiological saline (0.9%) to a final concentration of 10  $\mu\text{g}/\mu\text{l}$ . Haloperidol was dissolved in 75% dimethyl sulfoxide to concentrations of 0.015 mg/ml and 0.03 mg/ml. SCH23390 was purchased from Tocris (Ellisville, MO) and was dissolved in saline (pH 6.5) to final concentrations of 0.03 mg/ml and 0.06 mg/ml.

## 2.3 Surgery

Rats were anesthetized with sodium pentobarbital (65 mg/kg, IP). The skull was exposed and burr holes drilled above the medial PFC. Rats received bilateral injections of either saline (n=9) or ibotenic acid (n=12) at the following coordinates (mm relative to bregma): AP + 2.8, ML  $\pm 0.75$ , DV  $-3.3$  and DV  $-2.3$  [24]. Rats received two bilateral infusions, one at each DV coordinate. Each infusion delivered 0.4  $\mu\text{l}/\text{side}$  of 10  $\mu\text{g}/\mu\text{l}$  ibotenic acid at a rate of 0.2  $\mu\text{l}/\text{min}$ . The infuser remained in place for an additional 2 min following each infusion and then was raised for the second infusion or removed. Once the infuser was removed, the scalp was sutured shut.

## 2.4 Rodent Gambling Task (rGT)

The rGT was based upon that developed by Winstanely and colleagues [15, 17]. Rats were trained and tested in 5-hole operant chambers enclosed in sound attenuating chambers (Med Associates, Vermont); the center hole was occluded throughout all experiments.

Rats were first trained to retrieve food pellets (45-mg, Bio-Serv, Frenchtown NJ) from the food magazine over two consecutive days; during these sessions all holes were occluded. Next, rats were trained to nose poke in the holes under a continuous reinforcement schedule. In order to encourage equal nose poking in all 4 holes the two outer holes were occluded on the first session and the two inner holes occluded on the second session. On the third session and all subsequent sessions all 4 holes were open. The continuous reinforcement task began with the delivery of 1 food pellet and the illumination of the houselight and magazine light. Retrieval of the food pellet

1  
2  
3  
4 extinguished the magazine light and initiated a 5-sec inter-trial interval (ITI). **At the end**  
5 **of the ITI, lights at the rear of the holes (aperture lights) were illuminated and rats**  
6 **had 10 sec to make a response in any hole. Responses resulted in the delivery of**  
7 **a food pellet reward (Bio-Serv).** Rats were trained on the continuous reinforcement  
8 task until they received 100 rewards with less than 20 omissions in ~30 min.  
9

10  
11  
12  
13  
14  
15 Once rats reached criterion performance on the continuous reinforcement task they  
16 underwent 4 days of forced choice training on the full rGT. In each forced choice  
17 session only a single hole was available; this measure ensured that rats had experience  
18 with the contingencies associated with each hole prior to allowing rats to choose freely  
19 (see below). For the full rGT, sessions began with the delivery of a single food pellet  
20 and illumination of the houselight and the magazine light. Pellet retrieval extinguished  
21 the magazine light and initiated a 5-sec ITI. At the end of the ITI the 4 aperture lights  
22 were illuminated and rats had 10 sec (limited hold) to make a response in any hole. A  
23 response resulted in the assigned outcome (reward/punishment) for that hole (see  
24 **Table 1** for example). On rewarded trials the aperture lights were all extinguished, the  
25 magazine light was illuminated and the appropriate number of pellets was delivered to  
26 the magazine. On punished trials no pellets were delivered and the houselight and all  
27 aperture lights, except the one from the chosen hole, were extinguished for the duration  
28 of the punishment period (i.e., the chosen hole remained illuminated throughout the  
29 punishment period). The next trial commenced at the end of the punishment period or  
30 once the rat retrieved the food pellet reward. Failing to respond within the limited hold  
31 was scored as an omission and responses occurring during the ITI were scored as  
32 premature responses. Omissions and premature responses were punished with a 5-  
33 sec time out during which the houselight, magazine light and all aperture lights were  
34 extinguished. Each session lasted for a total of 60 min.  
35  
36  
37  
38  
39  
40  
41  
42  
43  
44  
45  
46  
47  
48  
49  
50  
51

52  
53 Four different spatial arrangements of the outcomes across holes were used. An  
54 individual rat however, was only trained and tested on a single spatial arrangement of  
55 outcomes. Two of the holes had relatively “advantageous” outcomes (increased total  
56 number of pellets over the entire 1 hour session) due to the low probability (0.1-0.2) and  
57  
58  
59  
60  
61  
62  
63  
64  
65



1  
2  
3  
4 short duration (5-10 sec) of punishment periods (see **Table 1**). The advantageous  
5 choices were associated with smaller rewards (1-2 pellets). Two holes were associated  
6 with relatively “disadvantageous” outcomes due to the high probability (0.5-0.6) and  
7 long duration (30-40 sec) of punishment. The disadvantageous choices were  
8 associated with larger rewards (3-4 pellets). The % responses at each hole and %  
9 advantageous responses ((# advantageous responses/total responses) \* 100) were  
10 used as indicators of decision-making. Once % advantageous responding stabilized (<  
11 5% variability across days), rats underwent surgery and were allowed to recover for 5-7  
12 days prior to beginning testing.  
13  
14  
15  
16  
17  
18  
19  
20  
21

## 22 **2.5 Testing**

### 23 *2.5.1 Effects of medial PFC Lesions on choice behavior*

24 After a 5-7 day recovery period rats were retested on the rGT for 5 consecutive days in  
25 order to assess the effects of medial PFC lesions on decision-making.  
26  
27  
28  
29  
30

### 31 *2.5.2 Effects of SCH23390 on choice behavior*

32 Next, the ability of the D1-like receptor antagonist SCH23390 to affect decision-making  
33 behavior in sham-operated and lesioned rats was assessed. SCH23390 (0.0, 0.03 and  
34 0.06 mg/kg, IP) was administered 30 min prior to testing; doses were administered in a  
35 counterbalanced fashion. Rats were given at least 2 drug-free days between  
36 consecutive drug doses.  
37  
38  
39  
40  
41  
42  
43

### 44 *2.5.3 Effects of haloperidol on choice behavior*

45 Finally, the ability of the D2-like receptor antagonist haloperidol to affect decision-  
46 making behavior in sham-operated and lesion rats was assessed. Haloperidol (0.0,  
47 0.015 and 0.03 mg/kg, SC) was administered 30 min prior to testing; doses were  
48 administered in a counterbalanced fashion. Rats were given at least 2 drug-free days  
49 between consecutive drug doses.  
50  
51  
52  
53  
54  
55  
56

## 57 **2.6 Histology**

1  
2  
3  
4 Following the last test session rats were anesthetized with sodium pentobarbital (100  
5 mg/kg, IP) and transcardially perfused with 0.9% NaCl followed by 4%  
6 paraformaldehyde. Following perfusions, brains were removed, post-fixed for 24 h and  
7 then cryoprotected in 30% sucrose prior to slicing on a microtome. Sections (40  $\mu$ m)  
8 were mounted on slides, stained with cresyl violet and the extent of the lesion assessed.  
9

## 15 **2.7 Statistical Analyses**

16  
17 rGT data were analyzed using repeated measures ANOVAs with Day, Dose and/or %  
18 Choice per hole as the within-subjects factor and Condition (sham-operated, lesioned)  
19 as the between-subjects factor. Significant effects were further analyzed using an  
20 estimated marginal means procedure with a Bonferroni correction.  
21  
22

23  
24  
25  
26 Measures of interest included: % advantageous responses, % choice per hole ((#  
27 responses per hole/ total responses)\*100), % omissions ((# omissions/total  
28 responses)\*100) and % premature responses ((# premature responses/total  
29 responses)\*100).  
30  
31  
32

## 35 **3.0 Results**

### 36 **3.1 Histology**

37  
38 **Figure 1** depicts the extent of the medial PFC lesions. Six rats were excluded from the  
39 experiment because their choice behavior never reached the pre-surgery stability  
40 criterion. One lesioned rat was excluded because of a unilateral lesion and two  
41 lesioned rats were excluded because of excessive damage that included an  
42 enlargement of the lateral ventricles. Thus, 9 rats remained in each group for the  
43 statistical analyses. One additional sham-operated rat was excluded from the statistical  
44 analysis on the haloperidol data because his behavior became unstable following  
45 SCH23390 administration.  
46  
47  
48  
49  
50  
51  
52

### 55 **3.2 Post-Lesion Tests**

56  
57 The % advantageous responses differed across day of test ( $F(5, 80) = 2.36, P < 0.05$ ;  
58 see **Figure 2A**) and there was a trend towards a difference between sham-operated  
59  
60  
61  
62  
63  
64  
65

1  
2  
3  
4 and lesioned rats ( $F(1, 16) = 4.00, P = 0.06$ ). Importantly there was a significant day X  
5 condition interaction ( $F(5, 80) = 3.15, P < 0.05$ ). Post-hoc analysis on the interaction  
6 revealed that lesioned rats had lower % advantageous responses on day 4 following  
7 surgery ( $P < 0.05$ ) and tended to have lower % advantageous responses on day 5  
8 following surgery ( $P = 0.07$ ) relative to their pre-surgery baseline performance. In  
9 addition, lesioned rats had lower % advantageous responses on post-lesion day 1 ( $P =$   
10  $0.07$ ), post-lesion day 4 ( $P < 0.05$ ) and post-lesion day 5 ( $P = 0.05$ ) compared to sham-  
11 operated rats.  
12  
13  
14  
15  
16  
17  
18  
19  
20

21 When the % choice of each hole were analyzed there was a significant effect of hole  
22 ( $F(3, 48) = 181.25, P < 0.01$ ; see **Figure 2B**) and a significant hole X day interaction  
23 ( $F(15, 240) = 1.89, P < 0.05$ ). On all days, rats chose hole 2 more frequently than they  
24 chose all other holes (all  $P < 0.05$ ); an effect that did not differ across days (all  $P >$   
25  $0.05$ ). Furthermore, there was a trend for a three-way condition X hole X day interaction  
26 ( $F(15, 240) = 1.67, P = 0.06$ ). Post-hoc analyses revealed that lesioned rats chose hole  
27 3 more frequently than sham-operated rats on post-lesion days 1, 4 and 5 (all  $P \leq 0.05$ )  
28 and lesioned rats chose hole 1 less frequently than sham-operated rats on post-lesion  
29 day 3 ( $P = 0.05$ ). All other main effects and interactions were not significant (all  $F <$   
30  $1.56$ , all  $P > 0.05$ ).  
31  
32  
33  
34  
35  
36  
37  
38  
39  
40

41 Day of testing significantly affected % omissions ( $F(5, 80) = 3.86, P < 0.01$ ; see **Figure**  
42 **2C**). Post-hoc analyses did not reveal that the % omissions were different between any  
43 two days (all  $P > 0.05$ ). There was no effect of condition or a condition X day interaction  
44 (both  $F < 1.17$ , both  $P > 0.05$ ).  
45  
46  
47  
48  
49

50 There were no significant effects or interactions for % premature responses (all  $F <$   
51  $1.06, P > 0.05$ ; see **Figure 2D**).  
52  
53  
54

55 There was a significant effect of day for the number of magazine entries ( $F(5, 80) =$   
56  $3.06, P < 0.05$ ; **Figure 2E**). However, the number of magazine entries made on any  
57  
58  
59  
60  
61  
62  
63  
64  
65

1  
2  
3  
4 given day did not differ from those made on any other day (all  $P > 0.05$ ). There was no  
5 effect of condition nor a condition X day interaction (both  $F < 0.05$ , both  $P > 0.05$ ).  
6  
7  
8

### 9 10 **3.3 Effects of SCH23390 administration on decision-making**

11 Following SCH23390 administration there was a main effect of condition ( $F(1,16) =$   
12  $4.32$ ,  $P=0.05$ ; see **Figure 3A**) whereby sham-operated rats had higher % advantageous  
13 responses than lesion rats. In addition, there was a significant SCH23390 X condition  
14 interaction ( $F(2,32) = 3.57$ ,  $P < 0.05$ ). Post-hoc analysis on the interaction revealed that  
15 lesioned-operated rats made fewer advantageous responses than did sham-operated  
16 rats after 0.0 mg/kg SCH23390 ( $P < 0.05$ ), but not after either 0.03 or 0.06 mg/kg  
17 SCH23390 (both  $P > 0.05$ ). In addition, lesioned rats made more advantageous  
18 responses following 0.03 mg/kg than they did following 0.0 mg/kg SCH23390 ( $P < 0.05$ ).  
19 There was no effect of SCH23390 on sham-operated rats ( $F(2,32) = 0.63$ ,  $P > 0.05$ ).  
20  
21  
22  
23  
24  
25  
26  
27  
28

29  
30 When the % choice of each hole were analyzed there was a significant main effect of  
31 hole ( $F(3,48) = 131.48$ ,  $P < 0.01$ ; see **Figure 3B**) and a significant condition X hole  
32 interaction ( $F(3,48) = 3.28$ ,  $P < 0.05$ ). Sham-operated rats chose hole 2 more  
33 frequently and tended to choose hole 3 less frequently than lesioned rats ( $P < 0.05$  and  
34  $P = 0.07$ , respectively). Both groups responded more in hole 2 than they did in any  
35 other hole (both  $P < 0.05$ ). SCH23390 did not affect % choice of each hole nor were  
36 there any drug by condition interactions (all  $F < 1.76$ , all  $P > 0.05$ ).  
37  
38  
39  
40  
41  
42  
43

44 SCH23390 administration dose-dependently affected % omissions ( $F(2, 32) = 17.34$ ,  $P$   
45  $< 0.01$ ; see **Figure 3C**). In addition there was a main effect of condition ( $F(1, 16) =$   
46  $7.69$ ,  $P < 0.05$ ) and a condition X dose interaction ( $F(2, 32) = 3.37$ ,  $P < 0.05$ ).  
47  
48  
49

50 Regardless of dose, lesioned rats omitted more trials after SCH23390 administration  
51 than after vehicle administration (both  $P < 0.05$ ). In addition, lesioned rats omitted more  
52 trials than sham-operated rats after both 0.03 and 0.06 mg/kg SCH23390 administration  
53 (both  $P < 0.05$ ). Importantly, SCH23390 did not affect the % omissions in sham-  
54 operated rats (both  $P > 0.05$ ).  
55  
56  
57  
58  
59  
60  
61  
62  
63  
64  
65

1  
2  
3  
4 SCH23390 administration significantly affected % premature responses ( $F(2,32) = 8.13$ ,  
5  $P < 0.01$ ; see **Figure 3D**). In addition, there was a trend for SCH23390 administration  
6 to affect premature responding differently in sham-operated and lesioned rats ( $F(2,32) =$   
7  $3.02$ ,  $P = 0.06$ ). Regardless of condition, rats made fewer premature responses after  
8 either 0.03 mg/kg or 0.06 mg/kg SCH23390 than they did after 0.0 mg/kg SCH23390  
9 (both  $P < 0.05$ ). Analysis of the dose X condition interaction revealed that the effect of  
10 dose was primarily due to the effect of SCH23390 administration in lesioned rats.  
11 Lesioned rats made fewer premature responses following 0.06 mg/kg than they did  
12 following 0.0 mg/kg SCH23390. Moreover, following administration of 0.06 mg/kg  
13 SCH23390 lesion rats made fewer premature responses than did sham-operated rats.  
14 There was no effect of condition on the % premature responses made ( $F(1,16) = 2.23$ ,  
15  $P > 0.05$ ).

16  
17  
18  
19  
20  
21  
22  
23  
24  
25  
26  
27  
28 SCH23390 administration significantly affected the number of magazine entries made  
29 ( $F(2,32) = 5.73$ ,  $P < 0.01$ ; see **Figure 3E**). Rats made fewer magazine entries after  
30 0.06 mg/kg SCH23390 than they did after 0.0 mg/kg SCH23390 ( $P < 0.05$ ). There was  
31 no effect of condition nor was there a condition X dose interaction (both  $F < 2.51$ , both  $P$   
32  $> 0.05$ ).

### 3.4 Effects of haloperidol administration on decision-making

34  
35  
36  
37  
38  
39 Following haloperidol administration lesioned rats made fewer advantageous responses  
40 than did sham-operated rats ( $F(1,15) = 7.33$ ,  $P < 0.05$ ; see **Figure 4A**), but the %  
41 advantageous responses was not affected by the dose of haloperidol nor was there a  
42 condition X dose interaction (both  $F < 1.0$ , both  $P > 0.05$ ).

43  
44  
45  
46  
47  
48  
49  
50 When the % choice of each hole were analyzed there was a significant % choice X  
51 condition interaction ( $F(3,45) = 6.27$ ,  $P < 0.01$ ; see **Figure 4B**). Lesioned rats chose  
52 hole 2 less frequently and hole 3 more frequently than sham-operated rats (both  $P <$   
53  $0.05$ ). Both groups chose hole 2 more than all other options (all  $P < 0.01$ ). Haloperidol  
54 dose and all interactions involving haloperidol were not significant (all  $F < 1.25$ , all  $P >$   
55  $0.05$ ).

1  
2  
3  
4  
5  
6 The % omissions committed were not affected by either haloperidol dose or condition  
7 (all  $F < 2.48$ ,  $P > 0.05$ ; see **Figure 4C**).  
8  
9

10  
11 Haloperidol significantly affected the % premature responses committed ( $F(2,30) = 6.21$ ,  
12  $P < 0.01$ ; see **Figure 4D**); rats made more premature responses following 0.03 mg/kg  
13 than they did following 0.0 mg/kg haloperidol ( $P < 0.05$ ). There was no effect of  
14 condition nor was there a condition X dose interaction (both  $F < 1.20$ , both  $P > 0.05$ ).  
15  
16  
17  
18

19  
20 Haloperidol significantly affected the number of magazine entries made ( $F(2,30) = 3.70$ ,  
21  $P < 0.05$ ; see **Figure 4E**); however there were no significant differences between doses  
22 (all  $P > 0.05$ ). In addition, there was a trend for lesioned animals to make more  
23 magazine entries than sham-operated rats ( $F(1,15) = 3.99$ ,  $P = 0.06$ ). There was  
24 however no condition X dose interaction ( $F(2, 30) = 1.27$ ,  $P > 0.05$ ).  
25  
26  
27  
28  
29  
30

## 31 **4.0 Discussion**

32  
33 The current experiment investigated the effects of medial PFC lesions on decision-  
34 making behavior in the rGT in well-trained rats. After receiving a lesion of the medial  
35 PFC, rats gradually shifted their choices from the most advantageous options to the  
36 disadvantageous options. Moreover, optimal decision-making was restored by  
37 administration of the D1-like receptor antagonist SCH23390, but not by administration of  
38 the D2-like receptor antagonist haloperidol. Neither SCH23390 nor haloperidol, at the  
39 doses used in the current experiment, affected decision-making when administered to  
40 sham-operated control rats.  
41  
42  
43  
44  
45  
46  
47  
48  
49

### 50 **4.1 Decision-making on the rodent gambling task**

51  
52 Rodent gambling tasks, like their human counterparts such as the IGT, require rats  
53 develop an optimal decision-making strategy based upon the expected reward value of  
54 each choice option. In the rGT the expected value of the reward can be determined by  
55 weighing the probability of attaining reward in any particular trial against the magnitude  
56 of the reward for that option. The optimal decision-making strategy is that which results  
57  
58  
59  
60  
61  
62  
63  
64  
65

1  
2  
3  
4 in the maximum number of rewards over the entire session, rather than the option that  
5 results in the maximum number of rewards in any particular trial. By this definition, the  
6 optimal choice in our version of the rGT is hole 2; exclusive choice of holes 1, 3 and 4  
7 result in fewer cumulative pellets over the course of the session compared to exclusive  
8 choice of hole 2 (see [15]). “Advantageous” decision-making is defined as responding  
9 in either of the two holes that lead to the greatest cumulative rewards (i.e., holes 1 and  
10 2) over the session. Due to the relatively short duration and relatively low probability of  
11 punishment, the choice of options that result in the smallest rewards on any given trial  
12 lead to the greatest net reward over the entire session. Importantly, rats used in the  
13 current experiment were able to develop stable optimal decision-making strategies: they  
14 chose hole 2 more than the other three holes and displayed more advantageous  
15 responses than disadvantageous responses.  
16  
17  
18  
19  
20  
21  
22  
23  
24  
25  
26

#### 27 **4.2 Effects of medial PFC lesions on decision-making**

28 We found that large lesions of the medial PFC, which included both the ventral  
29 (infralimbic) and dorsal (prelimbic) portions, impaired stable decision-making in the rGT.  
30 Rats with medial PFC lesions chose the advantageous options (holes 1 and 2) less  
31 frequently than they did prior to surgery and less frequently than did sham-operated  
32 control rats. Initially the decrease in advantageous responding was caused by lesioned  
33 animals increasing their choice of hole 3 (a disadvantageous response); in later testing  
34 lesioned rats also decreased their choice of hole 2 (an advantageous response).  
35 Combined, this strategy results in fewer rewards being obtained over the course of the  
36 session. These data add to a growing body of evidence finding impaired decision-  
37 making following damage to the medial PFC. Indeed, either excitotoxic lesions or  
38 temporary inactivation of the medial PFC impairs the acquisition of an optimal decision-  
39 making strategy [18, 25]. **To date, it is unclear whether the impairment in decision-**  
40 **making resulted primarily from damage to the prelimbic or infralimbic cortex.**  
41 **Although the damage to the prelimbic cortex has been found to impair decision-**  
42 **making [18, 25], it is not clear whether damage to the ventral portions of the**  
43 **medial PFC (i.e., infralimbic cortex) affect decision-making [17, 18].** Nevertheless,  
44 our data are consistent from the clinical literature whereby people with damage to the  
45  
46  
47  
48  
49  
50  
51  
52  
53  
54  
55  
56  
57  
58  
59  
60  
61  
62  
63  
64  
65

1  
2  
3  
4 dorsolateral prefrontal cortex, analogous to the rodent medial PFC, perform sub-  
5  
6 optimally on the IGT [14].  
7  
8

9  
10 The lesion-induced change in decision-making occurred gradually over the course of  
11 several days suggesting that the change in decision-making was not simply due to a  
12 failure to remember the contingencies associated with each response hole. Prior to  
13 surgery, rats chose the advantageous options on approximately 90% of the trials.  
14  
15 Following surgery, lesioned rats gradually sampled more from the disadvantageous  
16 options. Increased choice of the disadvantageous responses may have occurred either  
17 because lesioned rats were more sensitive to the size of the reward or because they  
18 were less sensitive to the punishment (i.e., they were more “risky”) associated with  
19 these options. To our knowledge there is no evidence that rats with medial PFC lesions  
20 exhibit an enhanced preference for large rewards over small rewards relative to sham-  
21 operated rats. Rather, in a delayed reinforcement task, rats with medial PFC lesions  
22 exhibited a reduced preference for large rewards when the delay to the large reward  
23 was 0 sec compared to sham-operated control rats [26]. Similarly, in a sustained  
24 response task, rats with medial PFC lesions exhibited a reduced preference for large  
25 rewards compared to sham-operated control rats [27]. Both of these results suggest  
26 that medial PFC lesions may actually cause a preference for small rewards over large  
27 rewards, a result opposite of that observed in the current experiment. Furthermore,  
28 reduced preference for large rewards in the lesioned rats cannot be explained by an  
29 inability to distinguish between reward magnitudes [28]. Combined, these data indicate  
30 that an enhanced sensitivity or motivation to obtain the large reward is unlikely to  
31 explain the shift in decision-making strategy observed following medial PFC lesions.  
32  
33  
34  
35  
36  
37  
38  
39  
40  
41  
42  
43  
44  
45  
46  
47  
48

49  
50 Alternatively, rats may have increased responding for the disadvantageous options  
51 (options 3 and 4) because they were less sensitive to the negative consequences  
52 associated with these options, namely the increased risk of obtaining no reward at all.  
53 There is limited evidence that rats in which the medial PFC had been temporarily  
54 inactivated or lesioned exhibit enhanced risk taking behavior [28, 29], in some, but not  
55 all tasks of “risky-decision making” [28]. These data suggest that a reduced sensitivity  
56  
57  
58  
59  
60  
61  
62  
63  
64  
65



1  
2  
3  
4 to the probabilistic nature of the reward *may* have contributed to the shift in decision-  
5 making strategy observed by rats with medial PFC lesions. That is, lesioned rats may  
6 not have been as sensitive to the duration and/or frequency of the punishment, and thus  
7 may have chosen the larger reward on more trials.  
8  
9

### 10 11 12 13 **4.3 Ability of Dopamine Receptor Antagonists to Attenuate Decision-Making** 14 **Deficits**

15  
16 Large medial PFC lesions (**including both prelimbic and infralimbic cortex**) can  
17 affect dopamine signaling, particularly in the striatum. Indeed there is evidence of  
18 increased DA release [20, but see 30], increased D2 receptor expression [21] and  
19 increased D1 receptor sensitivity [22] in the striatum following either ablative or  
20 excitotoxic lesions of the medial PFC. **Moreover, both the prelimbic cortex and**  
21 **infralimbic cortex project to the ventral tegmental area [31].** Thus, we sought to  
22 determine if administration of either a D1-like receptor antagonist, SCH23390, or a D2-  
23 like receptor antagonist, haloperidol, could attenuate the decision-making deficit  
24 observed following medial PFC lesions.  
25  
26  
27  
28  
29  
30  
31  
32  
33

#### 34 35 *4.3.1 Effects of SCH23390 administration on decision-making*

36  
37 Enhanced D1 receptor sensitivity likely contributed to the decision-making deficit  
38 observed following medial PFC lesions. Consistent with a previous report [15], D1  
39 receptor antagonism did not affect decision-making in sham-operated control rats. In  
40 contrast, D1 receptor antagonism significantly improved decision-making in lesioned  
41 rats. Following administration of SCH23390 the % advantageous choices made by  
42 lesioned rats was not significantly different from sham-operated controls rats. In  
43 addition, the low dose of SCH23390 significantly increased the % advantageous  
44 responses lesioned rats made relative to administration of vehicle; SCH23390 did not  
45 affect % advantageous responses in sham-operated rats. Surprisingly however,  
46 SCH23390 administration did not significantly increase lesioned rats' choice of the most  
47 optimal hole (hole 2). Instead the increase in % advantageous responses appears to  
48 result from small, but not significant, decreases in the choice of the least optimal holes  
49 (holes 3 and 4) and a small, but not significant, increase in the least 'risky' hole (hole 1).  
50  
51  
52  
53  
54  
55  
56  
57  
58  
59  
60  
61  
62  
63  
64  
65

1  
2  
3  
4 This *may* suggest that administration of SCH23390 increased advantageous decision-  
5 making by causing lesioned rats to be more risk averse. Consistent with this hypothesis  
6 SCH23390 administration caused rats to be risk averse in a probabilistic reinforcement  
7 task [32].  
8  
9

10  
11  
12 Other rGT performance measures also suggest that lesioned rats exhibited enhanced  
13 D1 receptor number or sensitivity relative to sham-operated rats. While sham-operated  
14 rats treated with SCH23390 exhibited slightly increased omissions and decreased  
15 premature responses, these effects were potentiated in the lesioned rats. **Combined**  
16 **this pattern of performance deficits suggests that lesioned rats were also more**  
17 **sensitive to the locomotor impairing effects of D1 receptor antagonism [33]**  
18 **thereby providing additional evidence that D1 receptors signaling was enhanced**  
19 **following the lesion [22]. Because responding in each of the apertures requires**  
20 **the same motor response, it is unlikely that the SCH23390-induced motor deficit**  
21 **contributed to the improvement in decision-making. That is, lesioned rats likely**  
22 **exhibited improved decision-making following SCH23390 administration despite**  
23 **displaying impaired locomotion.**  
24  
25  
26  
27  
28  
29  
30  
31  
32  
33  
34  
35  
36

#### 37 *4.3.2 Effects of haloperidol administration on decision-making*

38  
39 **The results from the current experiment suggest that upregulation of D2-like**  
40 **receptor signaling does not contribute to the decision-making impairment**  
41 **observed following medial PFC lesions. Not only did the D2-like receptor**  
42 **antagonist haloperidol fail to affect decision-making in both sham-operated and**  
43 **lesioned rats, there was no evidence that it differentially affected any**  
44 **performance measure in the two groups. Indeed, the only measure affected by**  
45 **haloperidol administration was premature responses; this measure was affected**  
46 **equally in both groups. It is possible that we did not use a high enough dose of**  
47 **haloperidol to observe a change in decision-making; problematically, higher**  
48 **doses of haloperidol are known to cause performance deficits in an attention task**  
49 **[34] and induced catalepsy [35]. Moreover, if lesioned rats exhibited an**  
50 **upregulation of D2 receptors [21] they would be expected to display cognitive**  
51  
52  
53  
54  
55  
56  
57  
58  
59  
60  
61  
62  
63  
64  
65

1  
2  
3  
4 **enhancement and/or motor impairments at lower doses of haloperidol than would**  
5 **sham-operated rats (as was observed with SCH23390). Because we did not**  
6 **observe enhanced sensitivity haloperidol following medial PFC lesions, we**  
7 **speculate that D2 receptors were unaltered by the lesion and thereby did not**  
8 **contribute to the decision-making deficit observed in the current experiment.**  
9

10  
11  
12  
13  
14  
15 **We were surprised by the lack of effect of haloperidol on decision-making in the**  
16 **current experiment because the D2 receptor antagonist eticlopride has been**  
17 **found to improve decision-making in both the rodent gambling task [15] and a**  
18 **probabilistic reinforcement task [32]. The discrepancy in the effects of eticlopride**  
19 **and haloperidol may lie in their affinities for different D2-like receptor subtypes;**  
20 **eticlopride is much more selective for the D2 receptor than is haloperidol [36].**  
21 **Indeed, haloperidol has affinity for D3 and D4 receptors in addition to D2**  
22 **receptors [37], while eticlopride has marginal affinity for these receptors [36]. In**  
23 **another decision-making task the effect of D3 receptor stimulation was opposite**  
24 **that of D2 receptor stimulation [32]. Thus, haloperidol may not affect decision-**  
25 **making in this task because it binds to both D2 and D3 receptors; these receptors**  
26 **appear to have opposite effects on decision-making.**  
27  
28  
29  
30  
31  
32  
33  
34  
35  
36  
37  
38

#### 39 **4.4 Summary and Conclusions**

40 In summary, we observed that excitotoxic lesions of the medial PFC caused  
41 impairments in decision-making in rats that displayed a stable pattern of optimal  
42 decision-making prior to undergoing surgery. Moreover, it is likely that the impairment  
43 in decision-making was mediated, at least in part, by increased sensitivity or  
44 upregulation of dopamine D1 receptors; the D1-like receptor antagonist SCH23390  
45 restored optimal decision-making in lesioned rats. Consistent with previous findings  
46 SCH23390 did not affect decision-making in sham-operated control rats. The D2-like  
47 receptor antagonist haloperidol did not affect decision-making in either sham-operated  
48 or lesioned rats.  
49  
50  
51  
52  
53  
54  
55  
56  
57  
58  
59  
60  
61  
62  
63  
64  
65

1  
2  
3  
4  
5  
6  
7  
8  
9  
10  
11  
12  
13  
14  
15  
16  
17  
18  
19  
20  
21  
22  
23  
24  
25  
26  
27  
28  
29  
30  
31  
32  
33  
34  
35  
36  
37  
38  
39  
40  
41  
42  
43  
44  
45  
46  
47  
48  
49  
50  
51  
52  
53  
54  
55  
56  
57  
58  
59  
60  
61  
62  
63  
64  
65

These data suggest that the deficits in medial PFC function and concomitant changes in dopamine signaling may be contributing to the decision-making deficits observed in a number of psychiatric illnesses. Indeed, schizophrenia [38], ADHD [2], substance abuse [3], and Parkinson’s Diseases [5] have all be associated with abnormalities in cortical functioning and dopamine signaling. Thus, treatments that address these pathologies may help to normalize the suboptimal decision-making strategies seen amongst psychiatric populations.

1  
2  
3  
4  
5  
6  
7  
8  
9  
10  
11  
12  
13  
14  
15  
16  
17  
18  
19  
20  
21  
22  
23  
24  
25  
26  
27  
28  
29  
30  
31  
32  
33  
34  
35  
36  
37  
38  
39  
40  
41  
42  
43  
44  
45  
46  
47  
48  
49  
50  
51  
52  
53  
54  
55  
56  
57  
58  
59  
60  
61  
62  
63  
64  
65

## **Acknowledgements**

Funded by a NARSAD Young Investigator Award and NIH R15MH098246 to TAP. The authors would like to thank Cassie Burley, Abigail Lofchie, Avery O'Hara and Kristina Welch for their technical assistance.

1  
2  
3  
4 **5.0 References**  
5

6 [1] Floresco SB, St Onge JR, Ghods-Sharifi S, Winstanley CA (2008). Cortico-limbic-  
7 striatal circuits subserving different forms of cost-benefit decision making. *Cognitive,*  
8 *Affective and Behavioral Neuroscience* 8: 375-389.  
9

10  
11  
12  
13 [2] Sonuga-Barke EJ, Fairchild G (2012). Neuroeconomics of attention-  
14 deficit/hyperactivity disorder: differential influences of medial, dorsal, and ventral  
15 prefrontal brain networks on suboptimal decision making? *Biol Psychiatry* 72: 126-133.  
16  
17  
18

19  
20 [3] Rogers RD, Robbins TW (2001). Investigating the neurocognitive deficits associated  
21 with chronic drug misuse. *Curr Opin Neurobiol* 11: 250-257.  
22  
23  
24

25  
26 [4] Gallagher DA, O'Sullivan SS, Evans AH, Lees AJ, Schrag A (2007). Pathological  
27 gambling in Parkinson's Disease: risk factors and differences from dopamine  
28 dysregulation. An analysis of published case series. *Movement Disorders* 22: 1757-  
29 1763.  
30  
31  
32

33  
34  
35 [5] Voon V, Mehta AR, Hallet M (2011) Impulse control disorders in Parkinson's  
36 disease: recent advances. *Current Opinion in Neurology* 24: 324-330.  
37  
38  
39

40  
41 [6] Ray MJ, Miyasaki JM, Zurowski M, Ko JH, Cho SS, Pellecchia G, Antonelli F, Houle  
42 S, Lang AE, Strafella AP (2012). Extrastriatal dopaminergic abnormalities of DA  
43 homeostasis in Parkinson's patients with medication-induced pathological gambling: a  
44 [11C] FLB-457 and PET study. *Neurobiology of Disease* 48: 519-525.  
45  
46  
47  
48

49  
50 [7] Brand M, Kalbe E, Labudda K, Fujiwara E, Kessler J, Markowitsch HJ (2005).  
51 Decision-making impairments in patients with pathological gambling. *Psychiatry Res*  
52 133: 91-99.  
53  
54  
55

56  
57 [8] Cavedini P, Riboldi G, Keller R, D'Annunzi A, Bellodi L (2002). Frontal lobe  
58 dysfunction in pathological gambling patients. *Biol Psychiatry* 51: 334-341.  
59  
60  
61  
62  
63  
64  
65

1  
2  
3  
4 [9] Struglia F, Stratta P, Gianfelice D, Pacifico R, Riccardi I, Rossi A (2011). Decision-  
5 making impairment in schizophrenia: Relationships with positive symptomatology.  
6 Neuroscience Letters 502: 80-83.  
7  
8

9  
10  
11 [10] Ritter LM, Meador-Woodruff JH, Dalack GW (2004). Neurocognitive measures of  
12 prefrontal cortical dysfunction in schizophrenia. Schizophrenia Research 68: 65-73.  
13  
14

15  
16  
17 [11] Beninger RJ, Wasserman J, Zanibbi K, Charbonneau D, Mangels J, Beninger BV  
18 (2003). Typical and atypical antipsychotic medications differentially affect two  
19 nondeclarative memory tasks in schizophrenic patients: a double dissociation.  
20 Schizophrenia Research 61: 281-292.  
21  
22  
23

24  
25  
26 [12] Yip SW, Sacco KA, George TP, Potenza MN (2009). Risk/reward decision-making  
27 in schizophrenia: a preliminary examination of the influence of tobacco smoking and  
28 relationship to Wisconsin Card Sorting Task performance. Schizophrenia Research 110:  
29 156-164.  
30  
31  
32

33  
34  
35 [13] Bechara A, Damasio H, Damasio AR, Lee GP (1999). Different contributions of the  
36 human amygdala and ventromedial prefrontal cortex to decision-making. Journal of  
37 Neuroscience 19: 5473-5481.  
38  
39  
40

41  
42  
43 [14] Fellows LK, Farah MJ (2005). Different underlying impairments in decision-making  
44 following ventromedial and dorsolateral frontal lobe damage in humans. Cerebral Cortex  
45 15: 58-63.  
46  
47  
48

49  
50 [15] Zeeb FD, Robbins TW, Winstanley CA (2009). Serotonergic and dopaminergic  
51 modulation of gambling behavior as assessed using a novel rat gambling task.  
52 Neuropsychopharmacology 34: 2329-2343.  
53  
54  
55  
56  
57  
58  
59  
60  
61  
62  
63  
64  
65

1  
2  
3  
4 [16] Rivalan M, Ahmed SH, Dellu-Hagedorn F (2009). Risk-prone individuals prefer the  
5 wrong options on a rat version of the Iowa Gambling Task. *Biological Psychiatry* 66:  
6 743-749.  
7  
8  
9

10  
11 [17] Zeeb FD, Winstanley CA (2011). Lesions of the basolateral amygdala and  
12 orbitofrontal cortex differentially affect acquisition and performance of a rodent gambling  
13 task. *The Journal of Neuroscience* 31: 2197-2204.  
14  
15  
16  
17

18  
19 [18] Rivalan M, Coutureau E, Fitoussi A, Dellu-Hagedorn (2011). Inter-individual  
20 decision-making differences in the effects of cingulate, orbitofrontal, and prelimbic  
21 cortex lesions in a rat gambling task. *Frontiers in Behavioral Neuroscience* 5:22.  
22 doi: 10.3389/fnbeh.2011.00022  
23  
24  
25  
26

27  
28 [19] Baardense PJJ, Winstanley CA, Vanderscheren LJMJ (2012). Simultaneous  
29 blockade of dopamine and noradrenaline reuptake promotes disadvantageous decision  
30 making in a rat gambling task. *Psychopharmacology (Berlin)*, *in press*.  
31  
32  
33  
34

35 [20] Jaskiw GE, Karoum F, Freed WJ, Phillips I, Kleinman JE, Weinberger DR (1990).  
36 Effect of ibotenic acid lesions of the medial prefrontal cortex on amphetamine-induced  
37 locomotion and regional brain catecholamine concentrations in the rat. *Brain Res* 534:  
38 263-272.  
39  
40  
41  
42  
43

44 [21] Baca SM, Lipska BK, Egan MF, Bachus SE, Ferguson JN, Hyde TM (1998).  
45 Effects of prefrontal cortical lesions on neuropeptide and dopamine receptor gene  
46 expression in the striatum-accumbens complex. *Brain Res* 797: 55-64.  
47  
48  
49  
50

51 [22] Reibaud M, Blanc G, Studler JM, Glowinski J, Tassin JP (1984). Non-DA prefronto-  
52 cortical efferents modulate D1 receptors in the nucleus accumbens. *Brain Res* 305: 43-  
53 50.  
54  
55  
56  
57  
58  
59  
60  
61  
62  
63  
64  
65



1  
2  
3  
4 [23] National Academy Press (2011). *Guide for the care and use of laboratory animals*,  
5 *8<sup>th</sup> Ed.* National Academy Press: Washington, DC.  
6  
7  
8

9  
10 [24] Paxinos, G, Watson C (2009). *The rat brain in stereotaxic coordinates*, 6<sup>th</sup> Ed.  
11 Academic Press: Orlando, FL.  
12  
13  
14

15 [25] de Visser L, Baars AM, van't Klooster J, van den Bos R (2011). Transient  
16 inactivation of the medial prefrontal cortex affects both anxiety and decision-making in  
17 male Wistar rats. *Frontiers in Neuroscience* 5: 102. doi: 10.3389/fnins.2011.00102  
18  
19  
20  
21

22 [26] Cardinal RN, Pennicott DR, Sugathapala CL, Robbins TW, Everitt BJ (2001).  
23 Impulsive choice induced in rats by lesions of the nucleus accumbens core. *Science*  
24 292: 2499-2501.  
25  
26  
27  
28

29 [27] Gill TM, Castaneda PJ, Janak PH (2010). Dissociable roles of the medial prefrontal  
30 cortex and nucleus accumbens core in goal-directed actions for different reward  
31 magnitudes. *Cerebral Cortex* 20: 2884-2899.  
32  
33  
34  
35

36 [28] St Onge JR, Floresco SB (2010). Prefrontal cortical contribution to risk-based  
37 decision making. *Cereb Cortex* 20:1816-1828.  
38  
39  
40  
41

42 [29] Jentsch JD, Woods JA, Groman SM, Seu E (2010). Behavioral characteristics and  
43 neural mechanisms mediating performance in a rodent version of the Balloon Analog  
44 Risk Task. *Neuropsychopharmacology* 35:1797-1806.  
45  
46  
47  
48

49 [30] Dalley JW, Thomas KL, Howes SR, Tsai TH, Aparicio-Legarza MI, Reynolds GP,  
50 Everitt BJ, Robbins TW (1999). Effects of excitotoxic lesions of the rat prefrontal cortex  
51 on CREB regulation and presynaptic markers of dopamine and amino acid function in  
52 the nucleus accumbens. *Eur J Neurosci* 11:1265-1274.  
53  
54  
55  
56  
57  
58  
59  
60  
61  
62  
63  
64  
65

1  
2  
3  
4 [31] Sesack SR, Grace AA (2010). Cortico-Basal Ganglia reward network:  
5 microcircuitry. *Neuropsychopharmacology* 35: 27-47.  
6  
7

8  
9 [32] St Onge JR, Floresco SB (2009). Dopaminergic modulation of risk-based decision  
10 making. *Neuropsychopharmacology* 34:681-697.  
11  
12

13  
14 [33] Meyer ME, Cottrell GA, Van Hartesveldt C, Potter TJ (1993). Effects of dopamine  
15 D1 antagonists SCH23390 and SK&F83566 on locomotor activities in rats. *Pharmacol*  
16 *Biochem Behav* 44: 429-32.  
17  
18

19  
20 [34] Paine TA, Carlezon WA Jr. (2009). Effects of antipsychotic drugs on MK-801-  
21 induced attentional and motivational deficits. *Neuropharmacology* 56: 788-797.  
22  
23

24  
25 [35] Perrault G, Depoortere R, Morel E, Sanger DJ, Scatton B (1997).  
26 Psychopharmacological profile of amisulpride: an antipsychotic drug with presynaptic  
27 D2/D3 dopamine receptor antagonist activity and limbic selectivity. *J Pharmacol Exp*  
28 *Ther* 280:73-82.  
29  
30  
31  
32

33  
34 [36] Martelle JL, Nader MA (2008). A review of the discovery, pharmacological  
35 characterization, and behavioral effects of the dopamine D2-like receptor antagonist  
36 eticlopride. *CNS Neurosci Ther* 14: 248-262.  
37  
38  
39  
40

41  
42 [37] Seeman P, Van Tol HHM (1994). Dopamine receptor pharmacology. *Trends in*  
43 *Pharmacological Sciences* 15: 264-270.  
44  
45  
46

47  
48 [38] Howes OD, Kapur S (2009). The dopamine hypothesis of schizophrenia: Version  
49 III—The final common pathway. *Schizophrenia Bulletin* 35: 549-562.  
50  
51  
52  
53  
54  
55  
56  
57  
58  
59  
60  
61  
62  
63  
64  
65

1  
2  
3  
4 **Figure Captions**  
5  
6  
7

8 **Figure 1.** The location and extent of ibotenic acid lesions of the medial prefrontal cortex  
9 (PFC). A) Schematic showing the largest (grey) and smallest (black) extent of the  
10 lesion on any particular section through the medial PFC. B) Photomicrograph depicting  
11 the average extent of damage caused by ibotenic acid infusions. Adapted from [24].  
12  
13  
14  
15

16  
17 **Figure 2.** Effects of medial PFC lesions on performance in the rodent gambling task.  
18 A) % Advantageous responses. Lesioned rats exhibit a decrease in their choice of  
19 advantageous options that progressively worsened across testing. B) % Choice of each  
20 hole (H). All rats chose hole 2 (most optimal) more than they chose the other 3 options.  
21 Lesioned rats chose hole 3 more frequently than sham-operated rats on post-lesion  
22 days 1, 4 and 5 and chose hole 1 less frequently than sham-operated rats on post-  
23 lesion day 3. There was no effects of either condition or day of testing on the %  
24 Omissions (C), the % Premature responses (D), or the number of magazine entries  
25 made (E). \* $P < 0.05$  sham-operated vs lesion; # $P < 0.05$  lesion compared to baseline;  
26  $\wedge P < 0.05$  both groups compared to baseline; ‡ $P < 0.5$ , sham-operated vs lesion hole 1;  
27 † $P < 0.05$  sham-operated vs lesion hole 3;  $\infty P < 0.05$  hole 2 vs all other holes.  
28  
29  
30  
31  
32  
33  
34  
35  
36  
37  
38

39 **Figure 3.** Effects of SCH23390 on choice behavior in the rodent gambling task. A)  
40 Lesioned rats chose the advantageous holes less frequently than sham-operated rats;  
41 this effect was attenuated by SCH23390 administration. B) All rats chose hole 2 more  
42 frequently than all other holes. In addition sham-operated rats chose hole 2 more  
43 frequently than lesioned rats. SCH23390 did not affect hole choice. C) SCH23390  
44 increased the % omissions in lesioned, but not sham-operated, rats. D) SCH23390  
45 administration significantly decreased the % premature responding; this effect was  
46 potentiated in lesioned rats. E) SCH23390 administration significantly reduced the  
47 number of magazine entries. \* $P < 0.05$  sham-operated vs lesion; # $P < 0.05$  lesion  
48 compared to baseline;  $\wedge P < 0.05$  both groups compared to baseline;  $\infty P < 0.05$  hole 2 vs  
49 all other holes.  
50  
51  
52  
53  
54  
55  
56  
57  
58  
59  
60  
61  
62  
63  
64  
65

1  
2  
3  
4 **Figure 4.** Effects of haloperidol on choice behavior in the rodent gambling task. A)  
5 Lesioned rats chose the advantageous holes less frequently than sham-operated rats;  
6 this effect was not affected by haloperidol administration. B) All rats chose hole 2 more  
7 than all other holes. In addition sham-operated rats chose hole 2 more frequently and  
8 chose hole 3 less frequently than lesioned rats. Haloperidol did not affect hole choice.  
9 C) Haloperidol did not affect % omissions. D) Haloperidol (0.03 mg/kg) increased the %  
10 premature responding. E) There was a tendency for lesioned rats to make more  
11 magazine entries than sham-operated rats; this was not affected by haloperidol  
12 administration. \* $P < 0.05$  sham-operated vs lesion; # $P < 0.05$  lesion compared to  
13 baseline; ^ $P < 0.05$  both groups compared to baseline;  $\infty P < 0.05$  hole 2 vs all other  
14 holes.  
15  
16  
17  
18  
19  
20  
21  
22  
23  
24  
25  
26  
27  
28  
29  
30  
31  
32  
33  
34  
35  
36  
37  
38  
39  
40  
41  
42  
43  
44  
45  
46  
47  
48  
49  
50  
51  
52  
53  
54  
55  
56  
57  
58  
59  
60  
61  
62  
63  
64  
65

Figure(s)  
[Click here to download high resolution image](#)

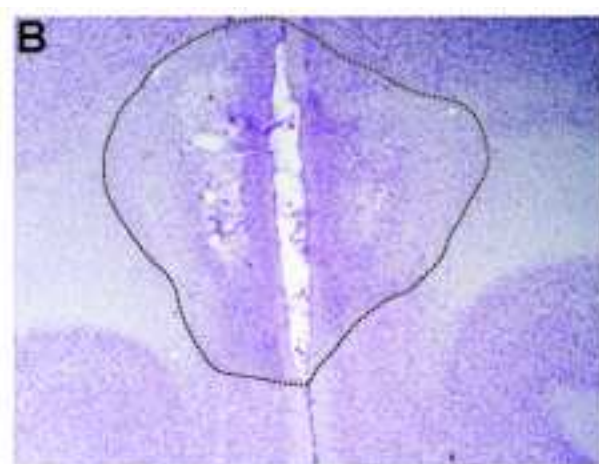
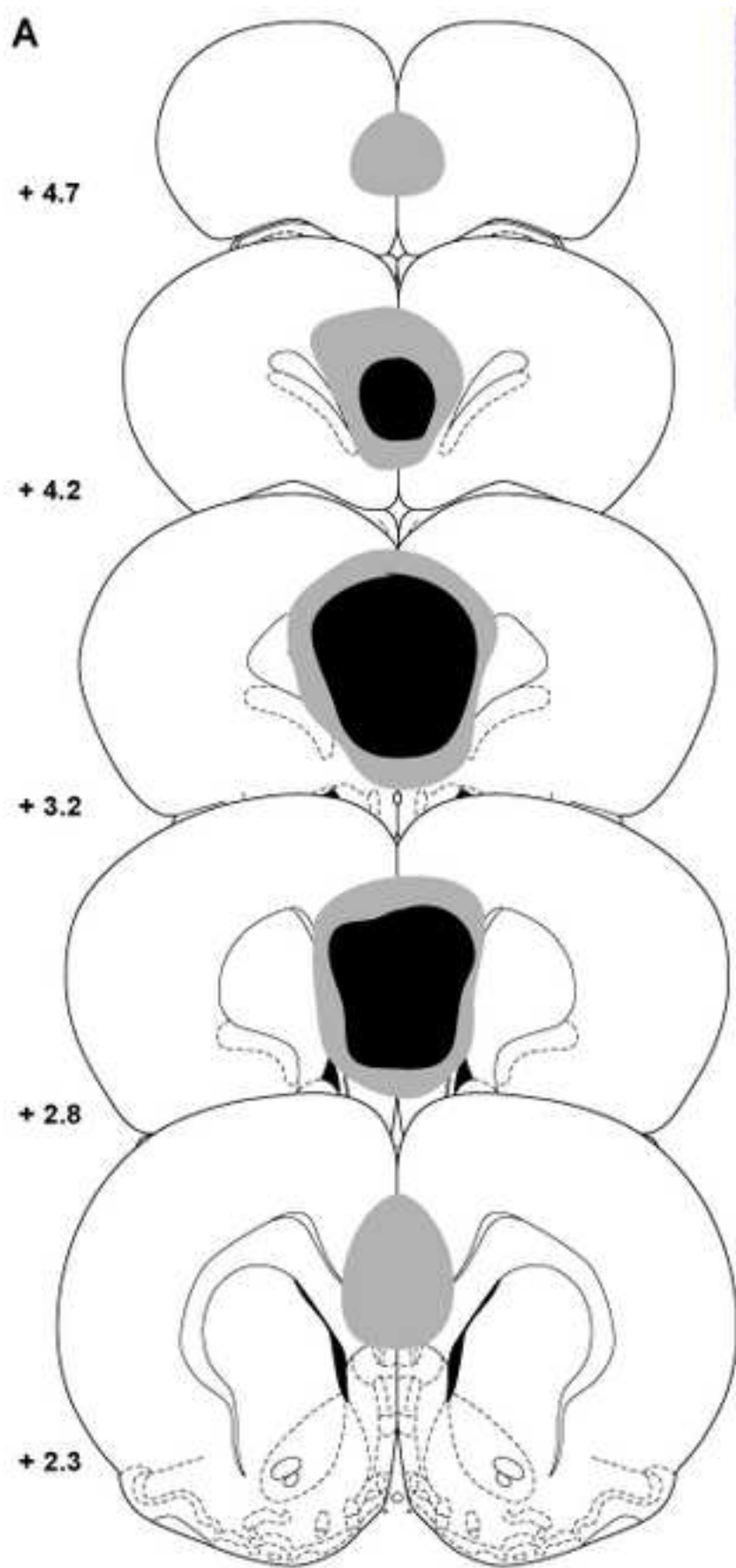


Figure 2  
[Click here to download high resolution image](#)

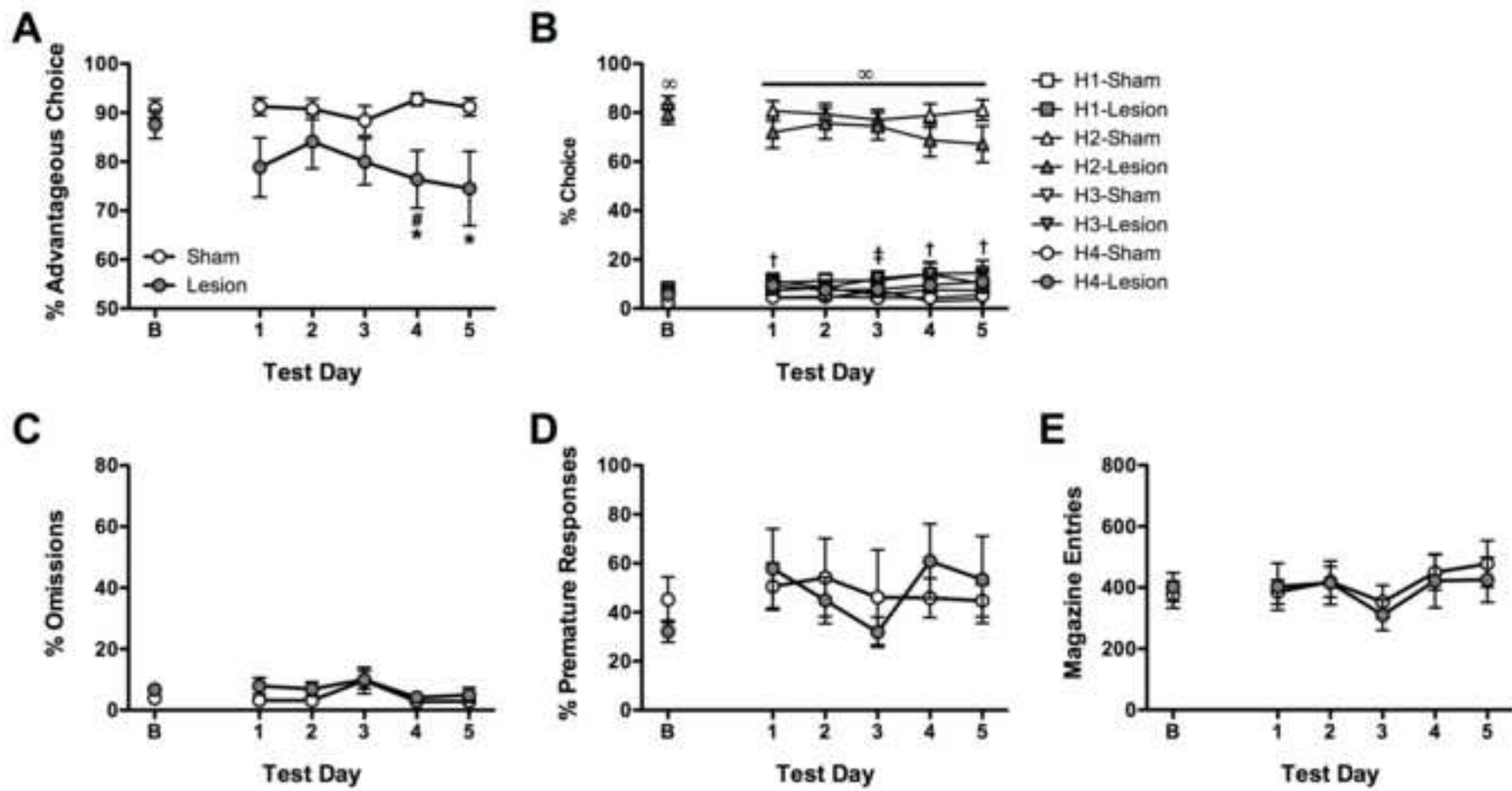


Figure 3  
[Click here to download high resolution image](#)

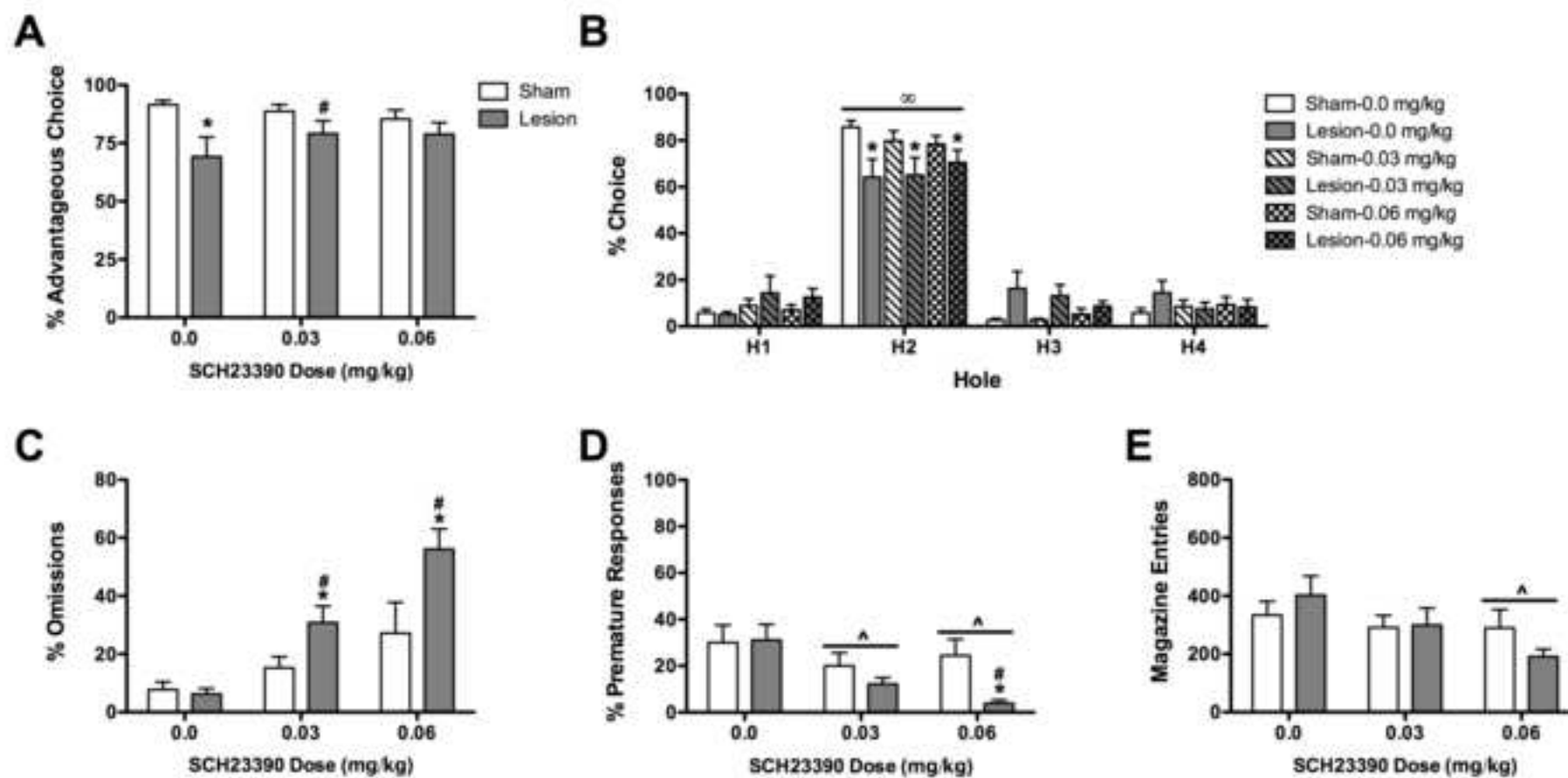
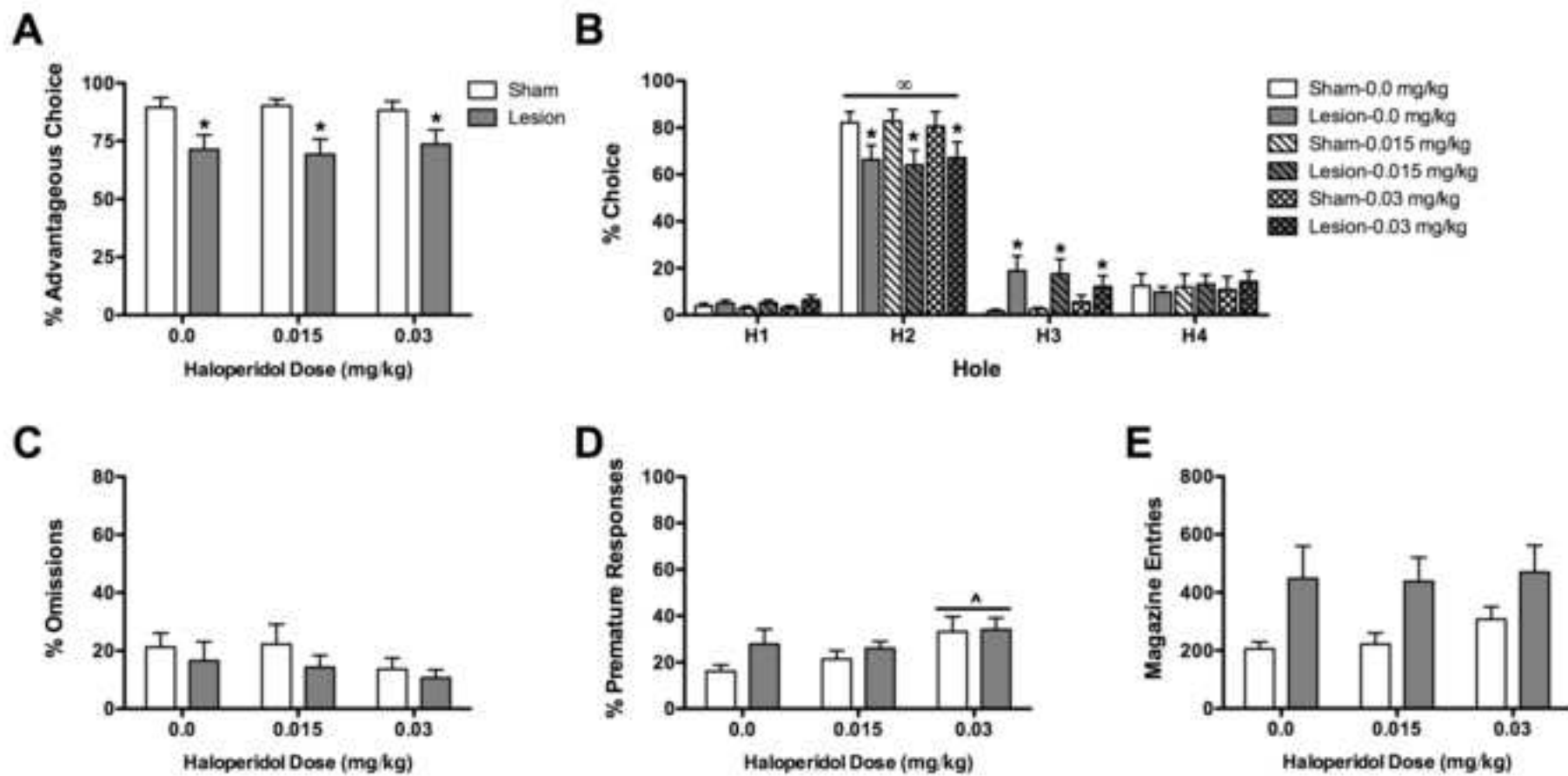


Figure 4  
[Click here to download high resolution image](#)





## Tables

**Table 1.** Example of response contingencies across nose poke holes

	Hole (H) 1	H2	H3	H4
# of Rewards	4	1	3	2
Punishment	40	5	30	10
Duration (sec)				
Probability of Punishment	0.6	0.1	0.5	0.2

Note: There were 4 different spatial arrangements of outcomes; one such arrangement is depicted here. An individual rat was assigned a single arrangement for the duration of the experiment. On rewarded trials the number of pellets indicated were delivered for that choice; on punished trials the no pellets were delivered.